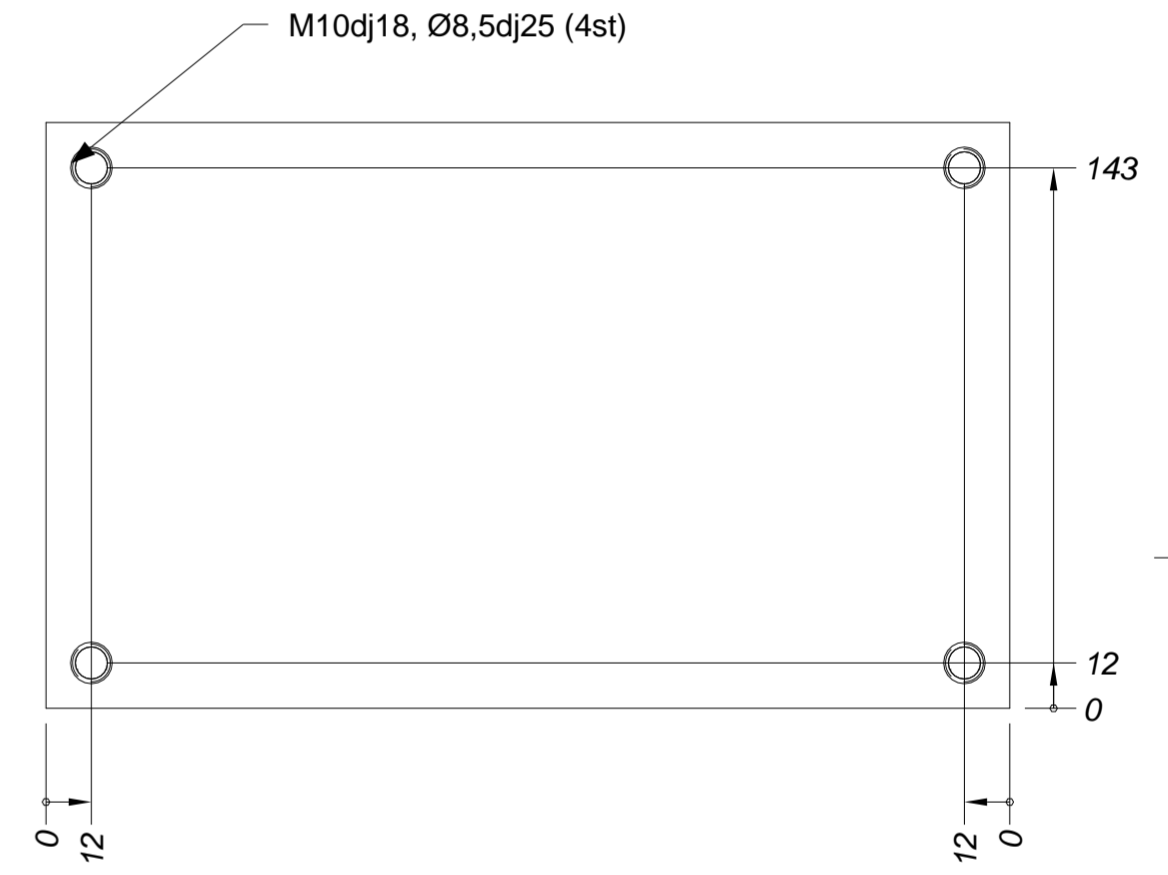
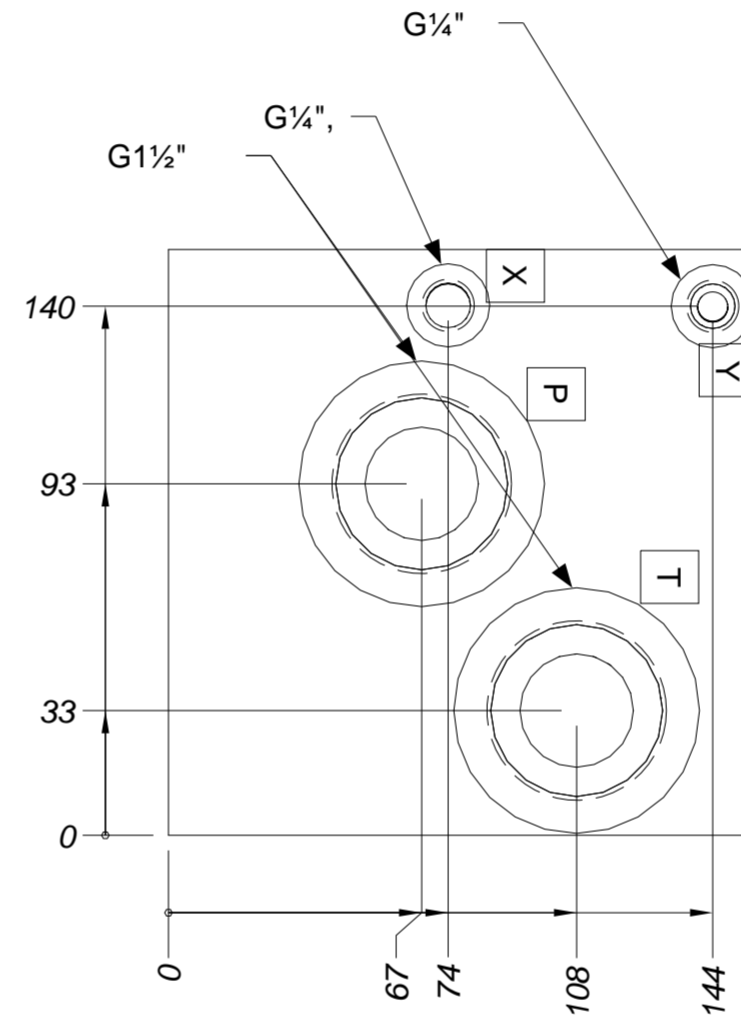
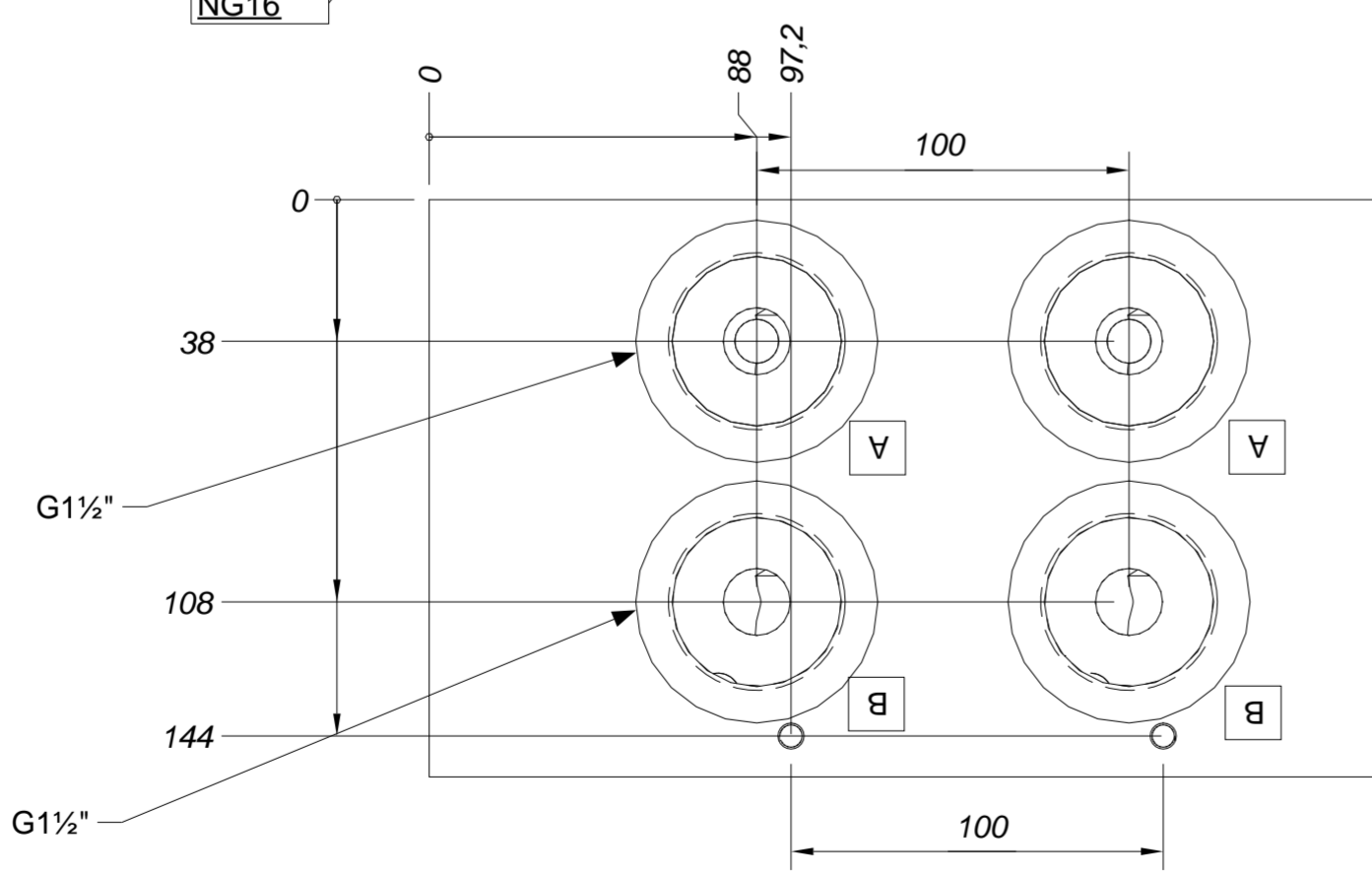
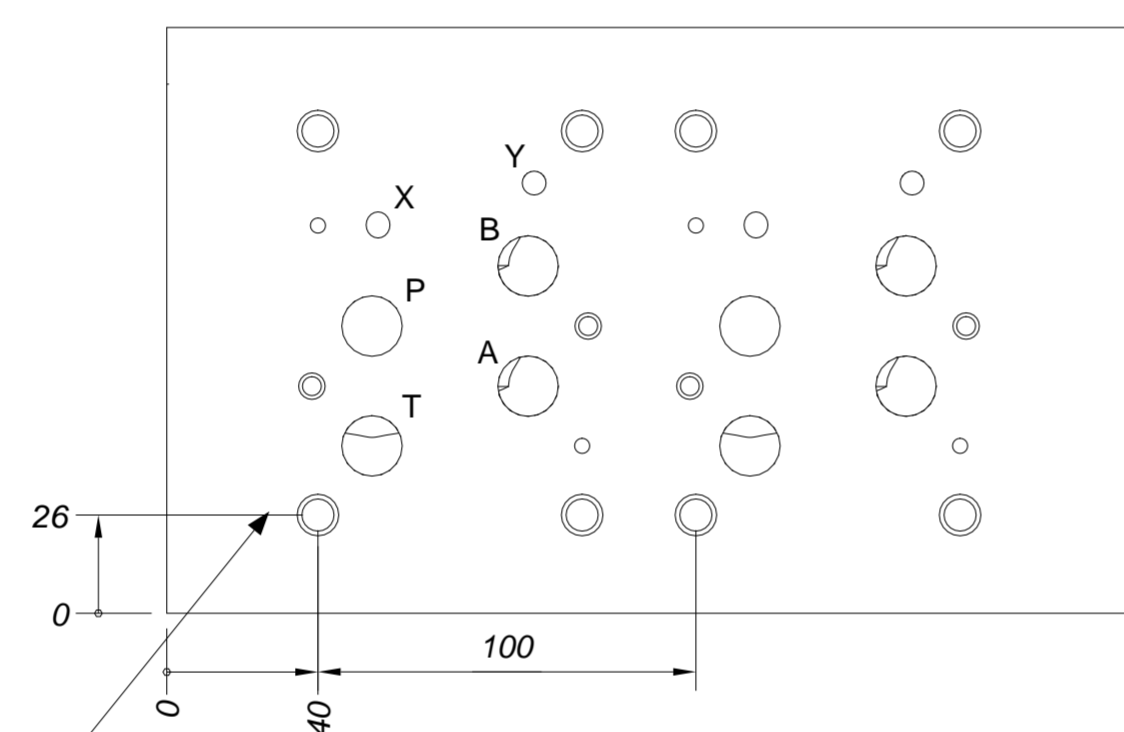
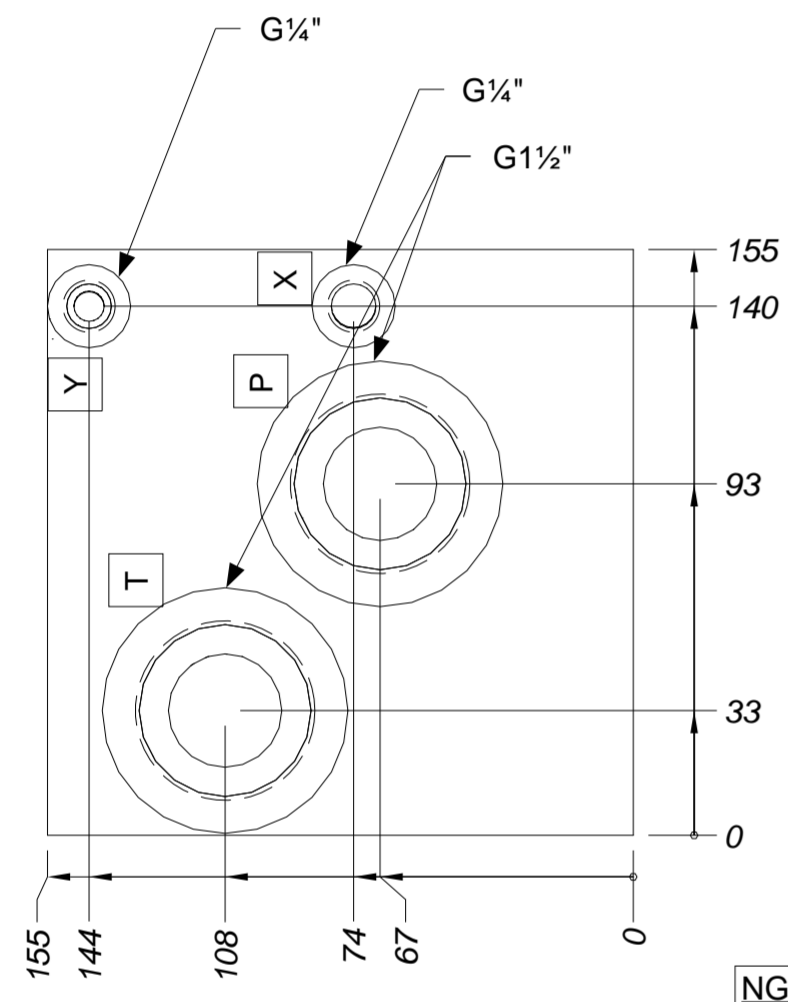
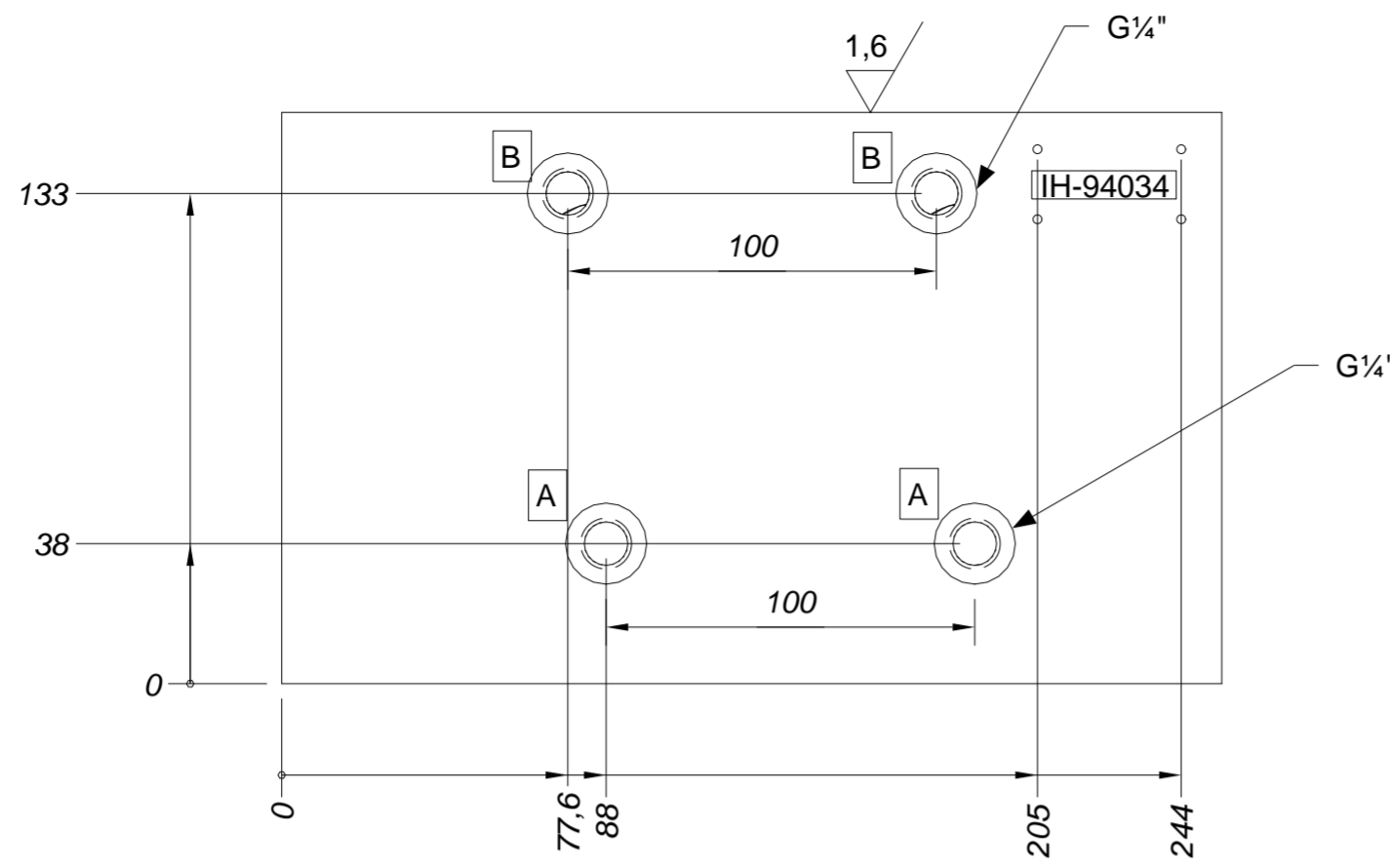


	1	2	3	4
Antal ventiler	1	2	3	4
Delning	L	L	L	L
100-standard	155	255	355	455

RevNr.	Revision note	Date	Sign
--------	---------------	------	------



- Not 1: Hål måttsatta till full borrhål diameter
- Not 2: Gängmått avser full gänglängd.
- Not 3: Skarpa kanter brytes.
- Not 4: Blocket skall noggrant göras fritt från bearbetningsgrader samt rengöras.
- Not 5: Övriga ytor Ra 6,3.
- Not 6: Bokstäver och siffror, inramade, ex. [A] skall stämplas. h=3-5 mm.
- Not 7: Blocket skall stämplas med tillverkningsår och vecka, under ritn. nr. (ÅÅ, VV).

E	A2	General Tolerances acc to : ISO 2768-1 medium	Stål SS2172 155x155xL	
			Scale 1:2	
	Drawn	Checked	Dat.	
	K.W	S.N	040603	
Industrihydraulik AB			Title	
			NG16 sida C-C 100	
			Sheet 1	Rev.
			Doc.Nr IH-94034	