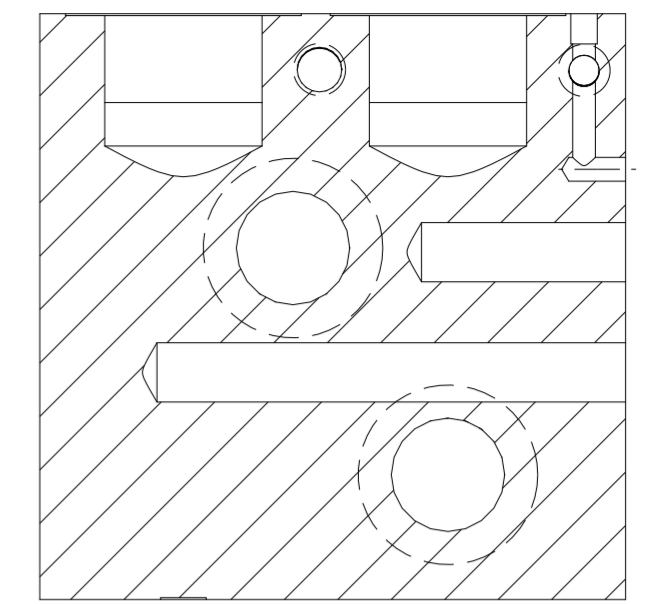
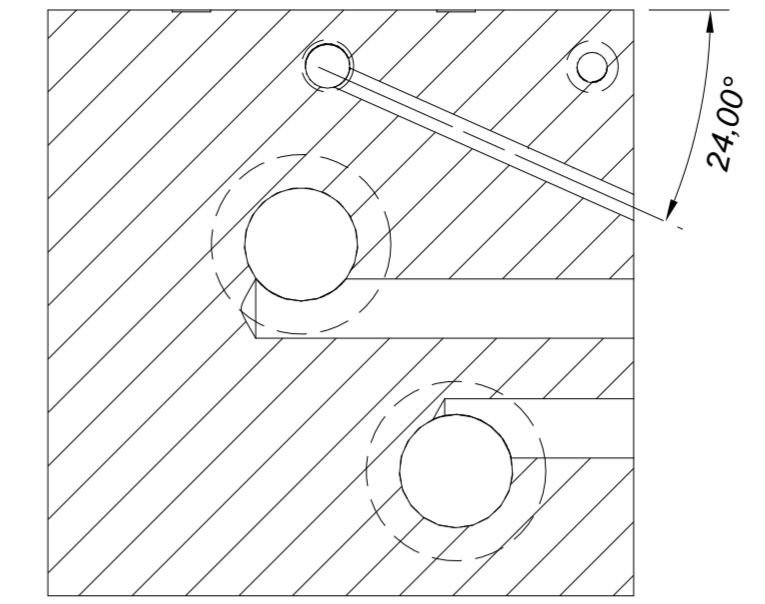
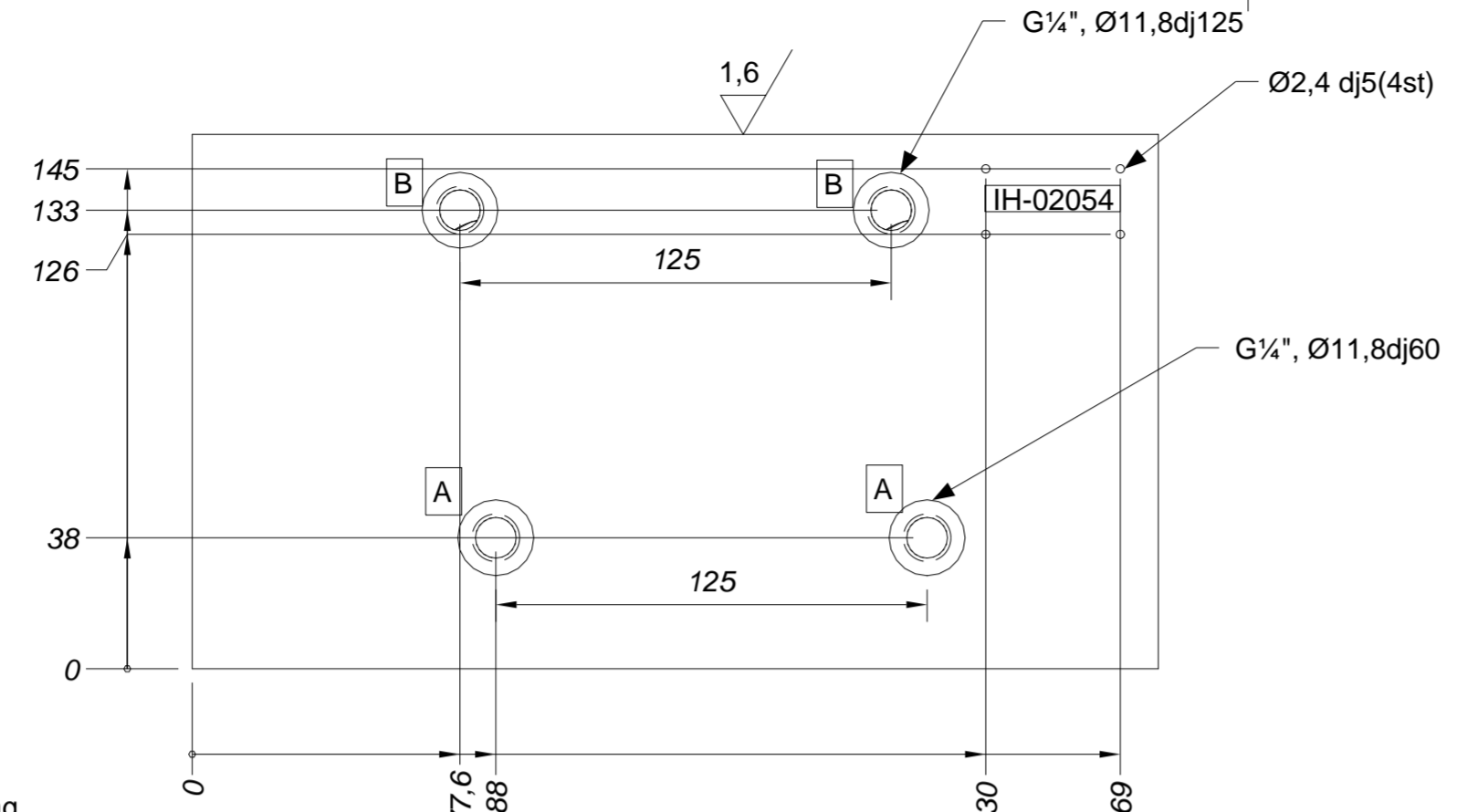


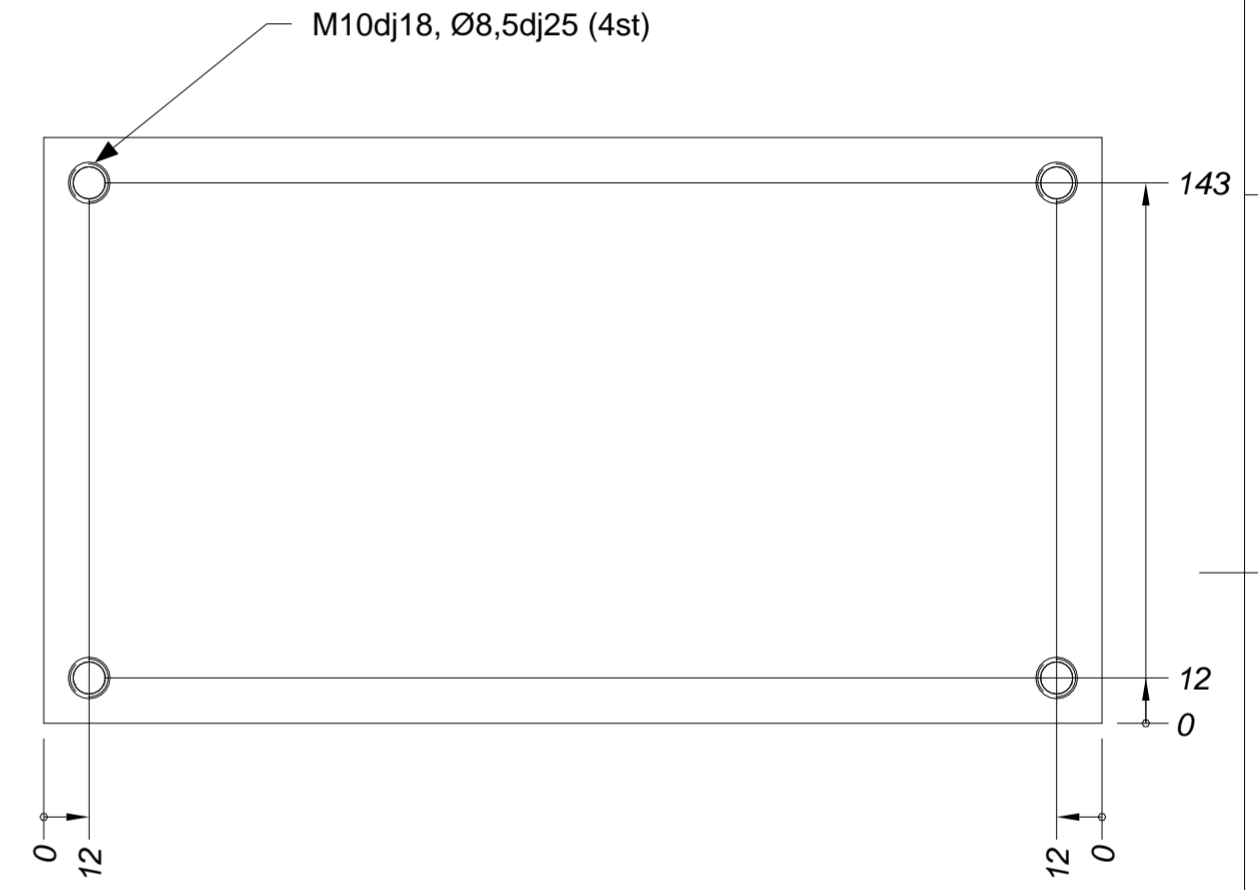
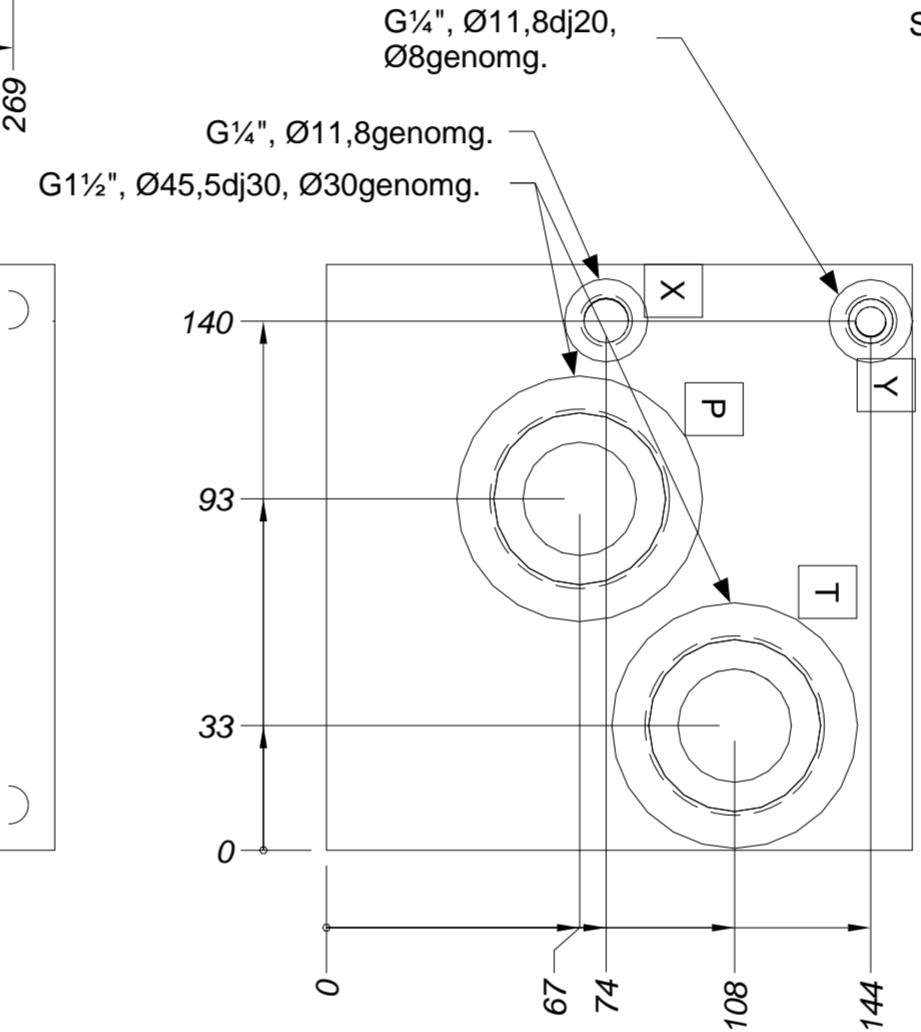
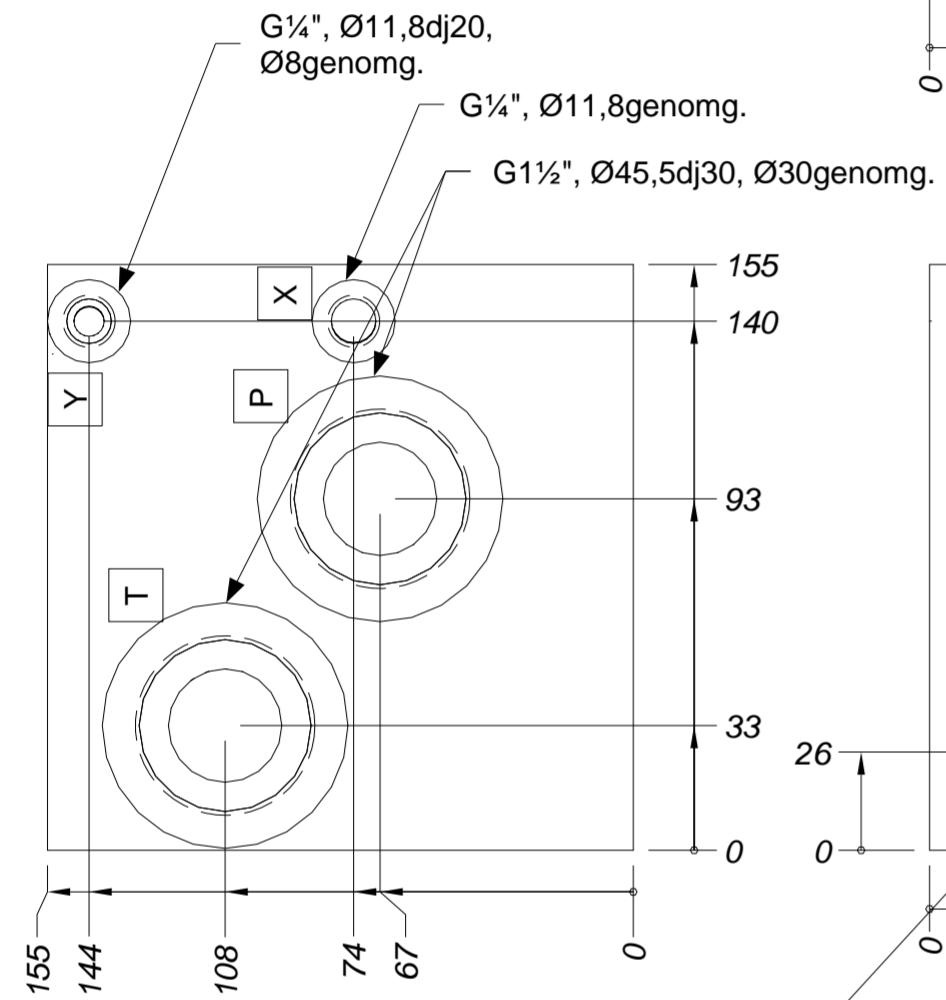
	1	2	3	4
Antal ventiler	1	2	3	4
Delning	L	L	L	L
125-standard	155	280	405	530

RevNr.	Revision note	Date	Sign
--------	---------------	------	------

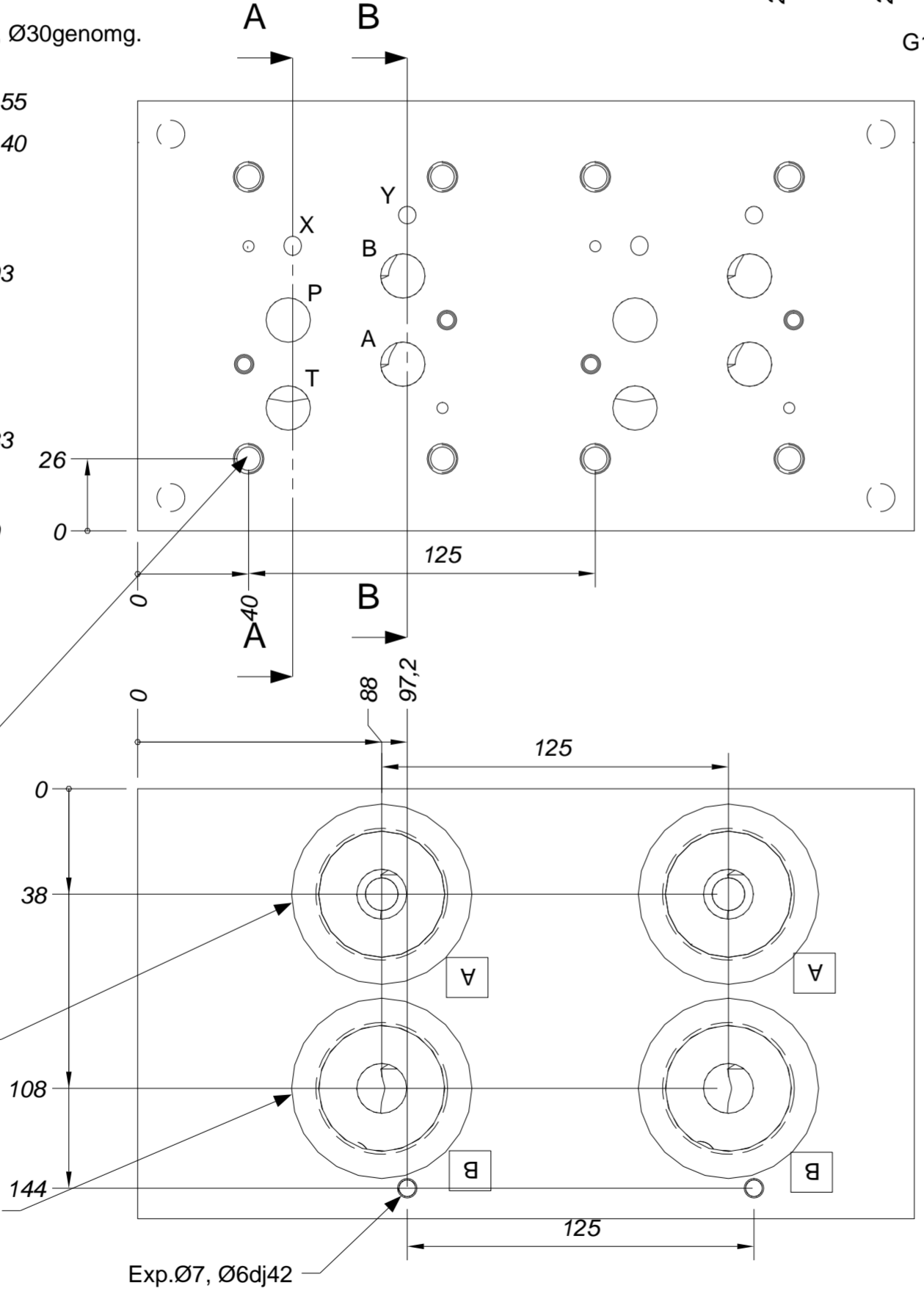


Snitt A-A

Snitt B-B



- NG16**
M10dj18, Ø8,5dj max 23
M6dj10, Ø5dj max15
styrpinne Ø4dj max6
A Ø16dj124
B Ø16dj54
P Ø16dj100
T Ø16dj54
X Ø6dj90 24° se snitt A-A
Y Ø6dj12 se snitt B-B



- Not 1: Hål måttsatta till full borrhål diameter
Not 2: Gängmått avser full gänglängd.
Not 3: Skarpa kanter brytes.
Not 4: Blocket skall noga göras fritt från bearbetningsgrader samt rengöras.
Not 5: Övriga ytor Ra 6,3.
Not 6: Bokstäver och siffror, inramade, ex. **A** skall stämplas.h=3-5 mm.
Not 7: Blocket skall stämplas med tillverkningsår och vecka, under ritn. nr. (ÅÅ,VV).

E	A2	General Tolerances acc to : ISO 2768-1 medium	Stål SS2172 155x155xL		Dat. 031007
			Drawn K.W	Checked S.N	
Scale 1:2			Title NG16 sida C-C 125		Sheet 1 Rev.
Industrihydraulik AB					Doc.Nr IH-02054